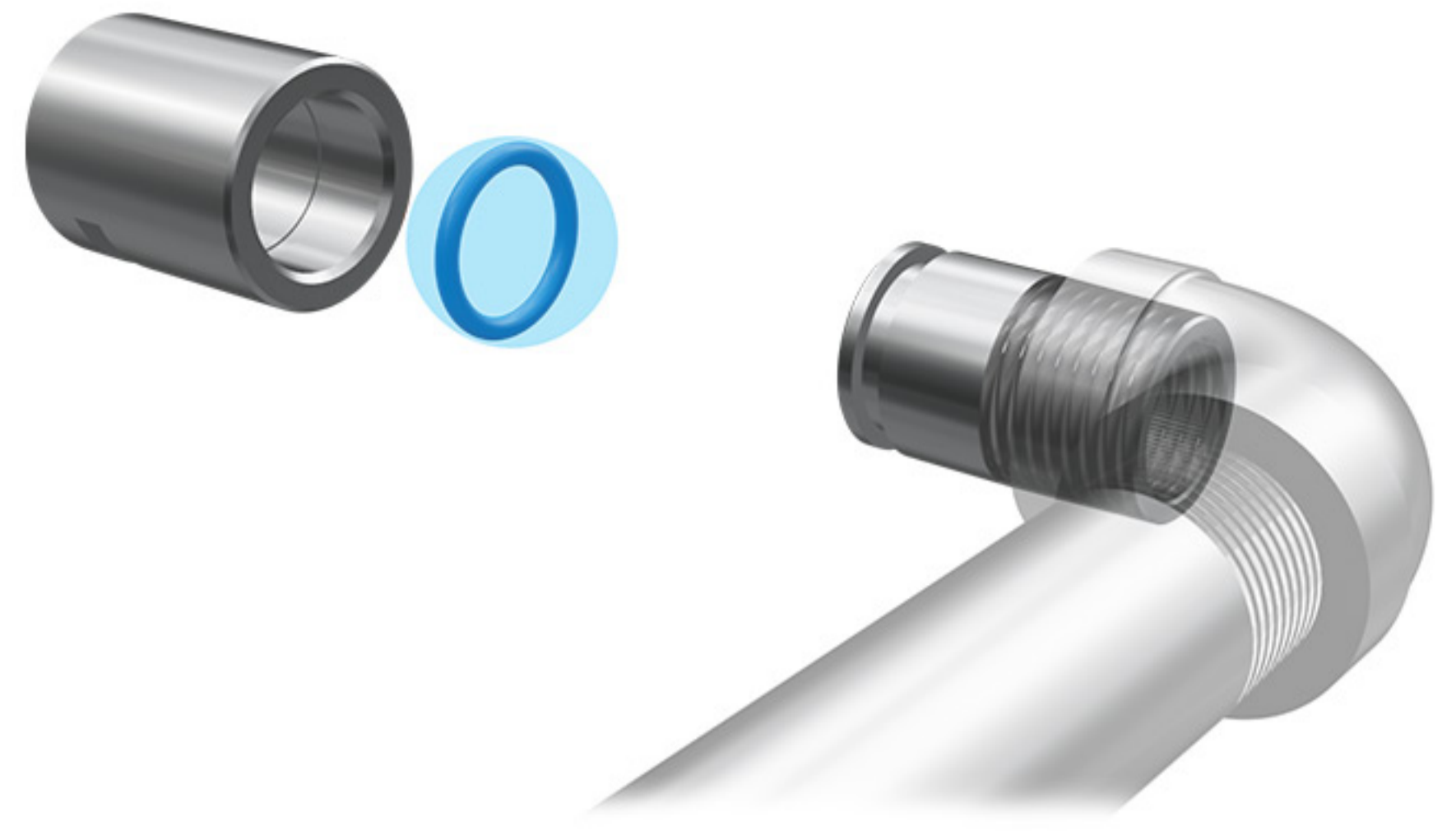


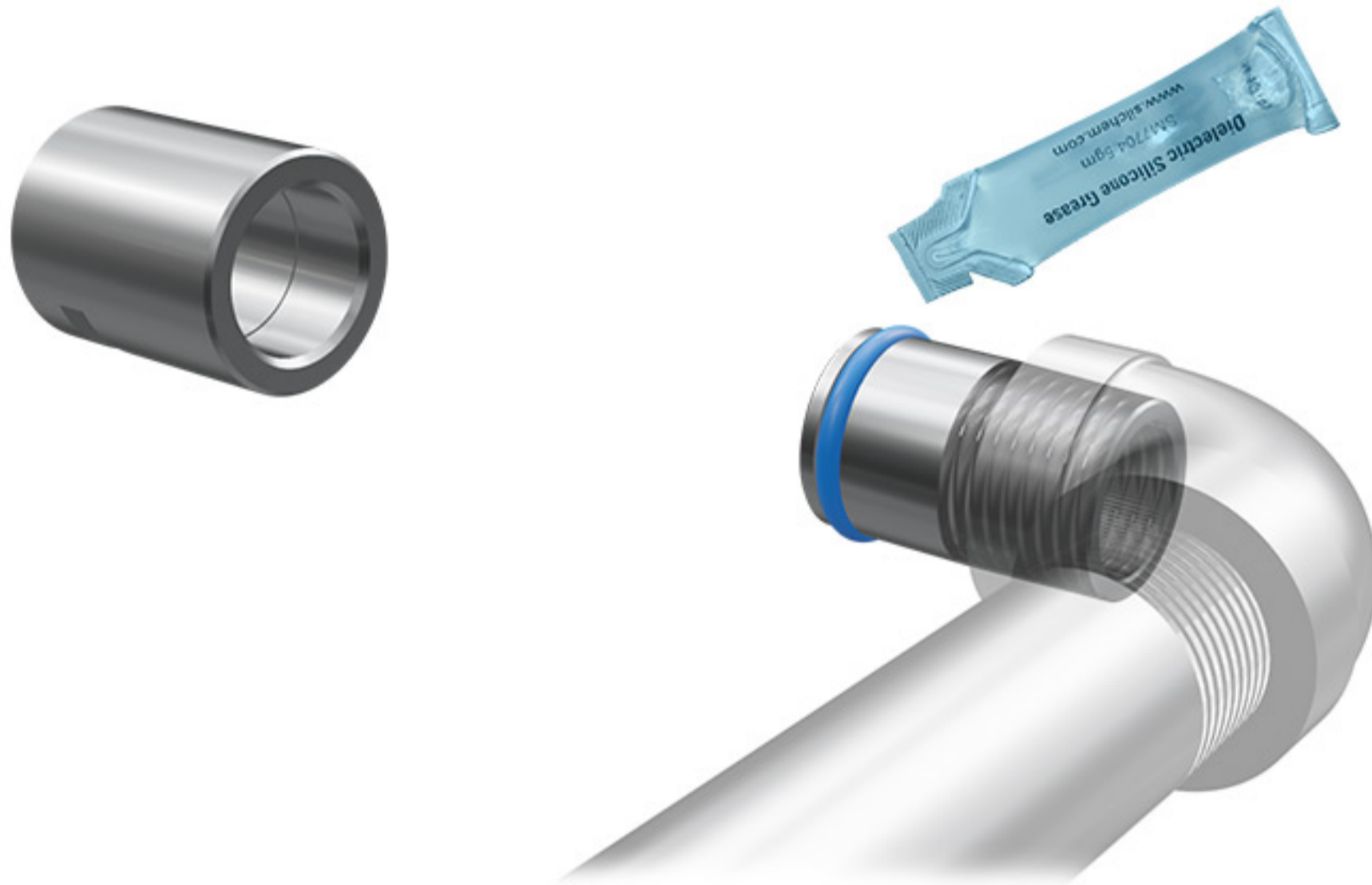
Step One

Install the nipple on the unit outlet.



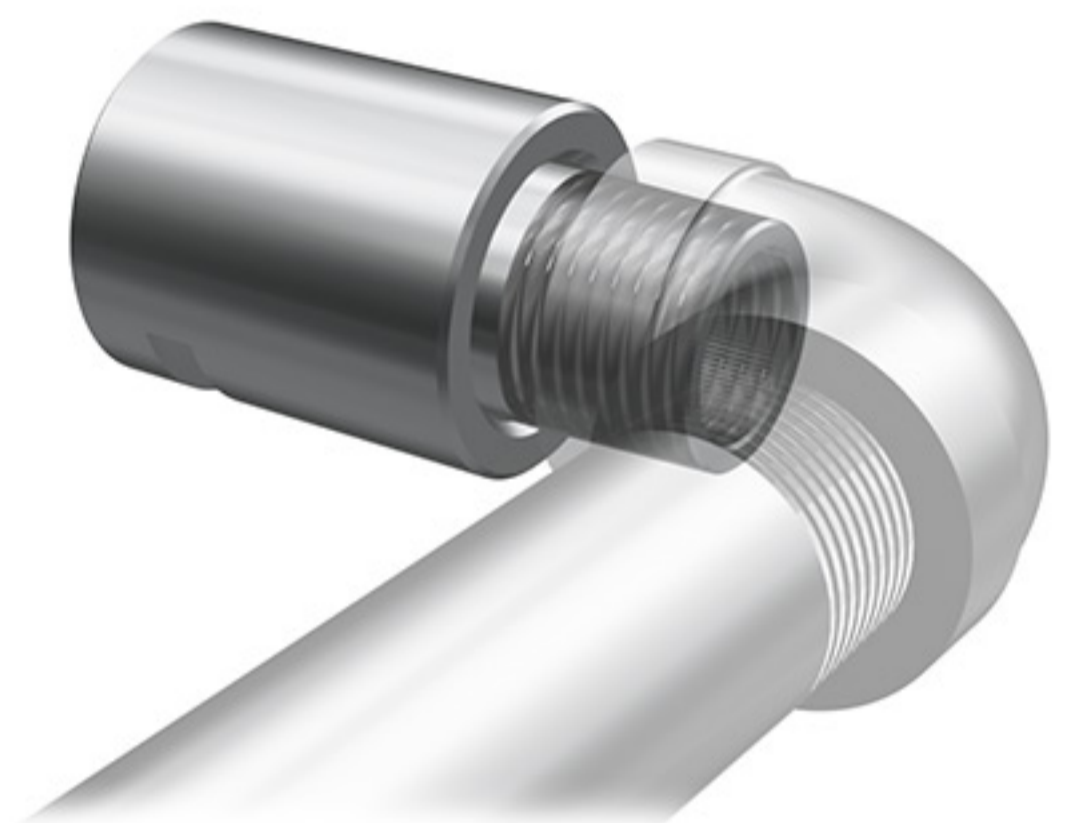
Step Two

Install the o-ring.



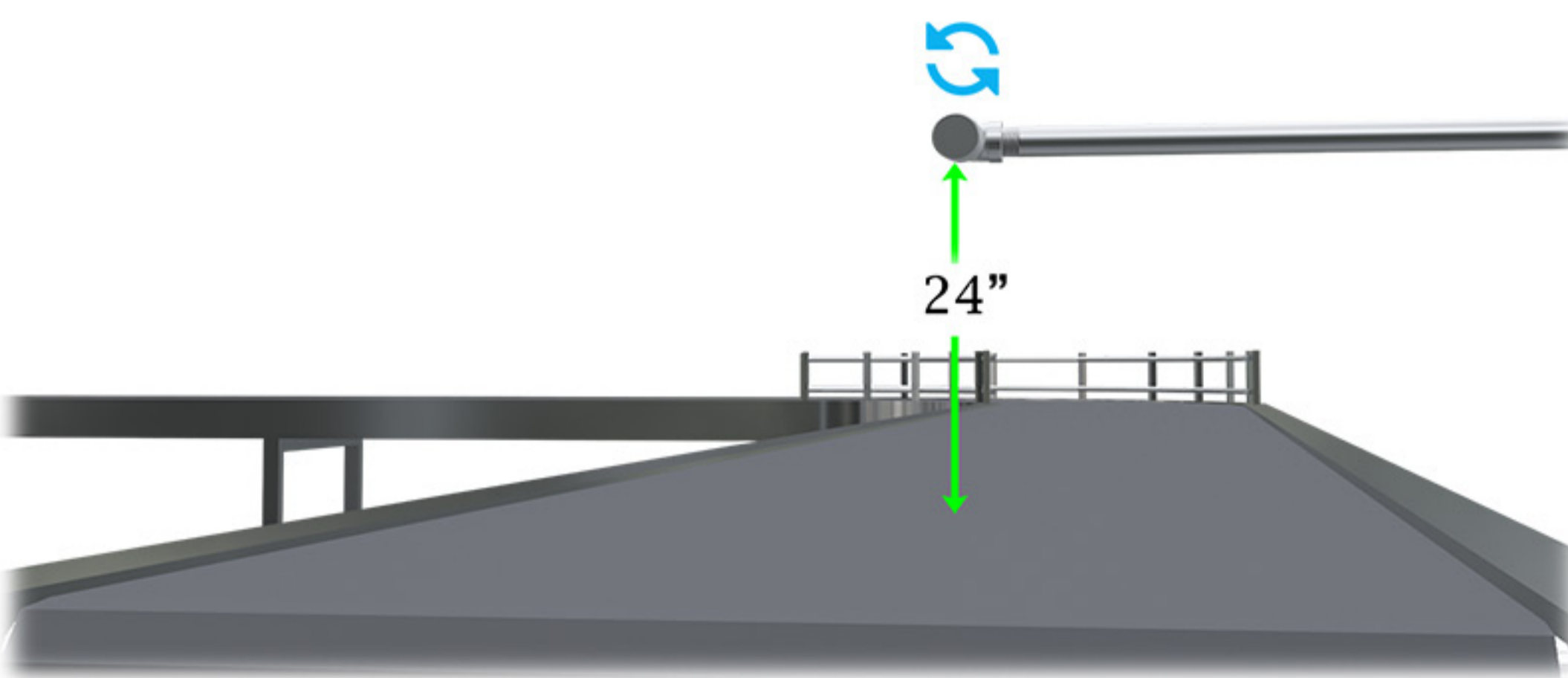
Step Three

Apply the Silicone Grease provided around the o-ring.



Step Four

Firmly push and twist the spreader nozzle until the o-ring falls in line with the groove.



Step Five

Adjust nozzle angle and height for optimal coverage.

Coverage settings on back

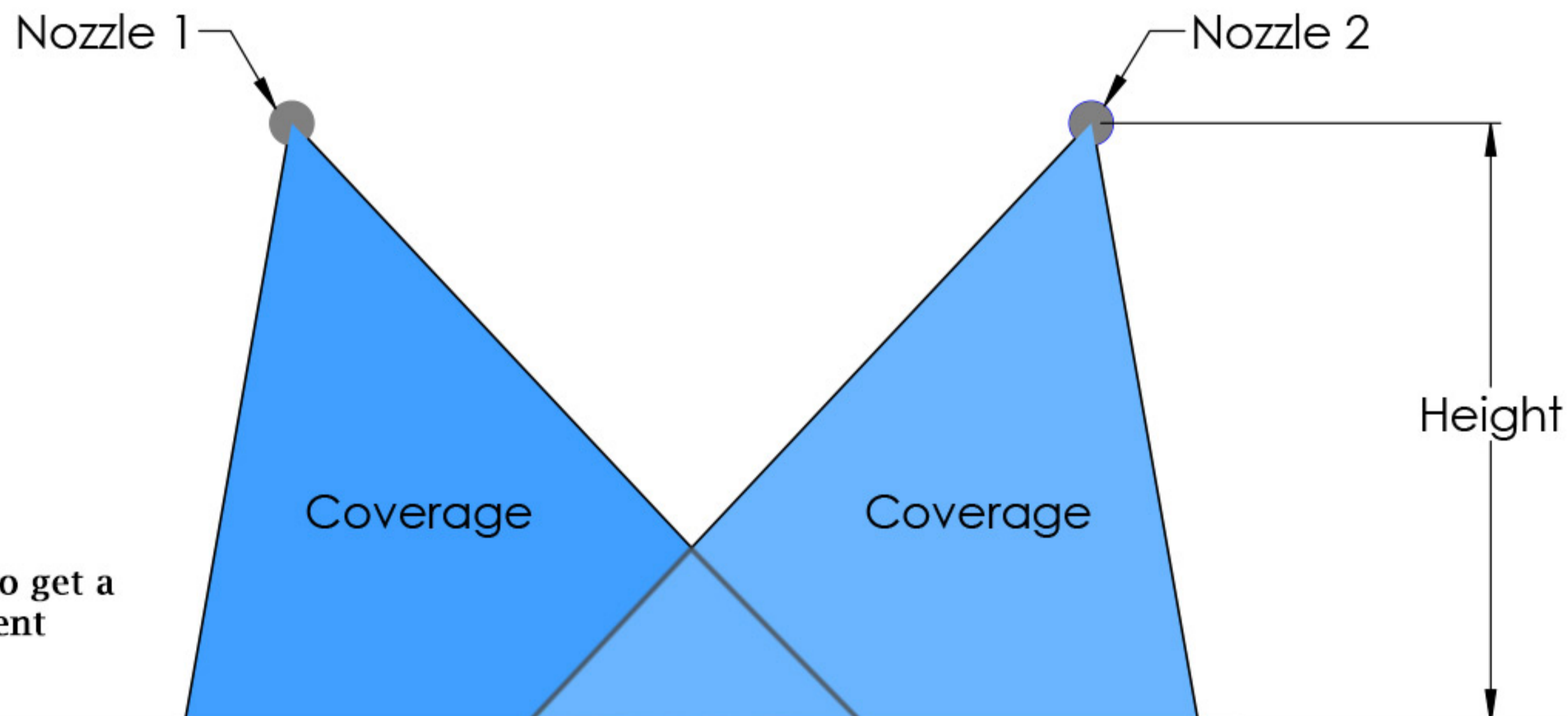
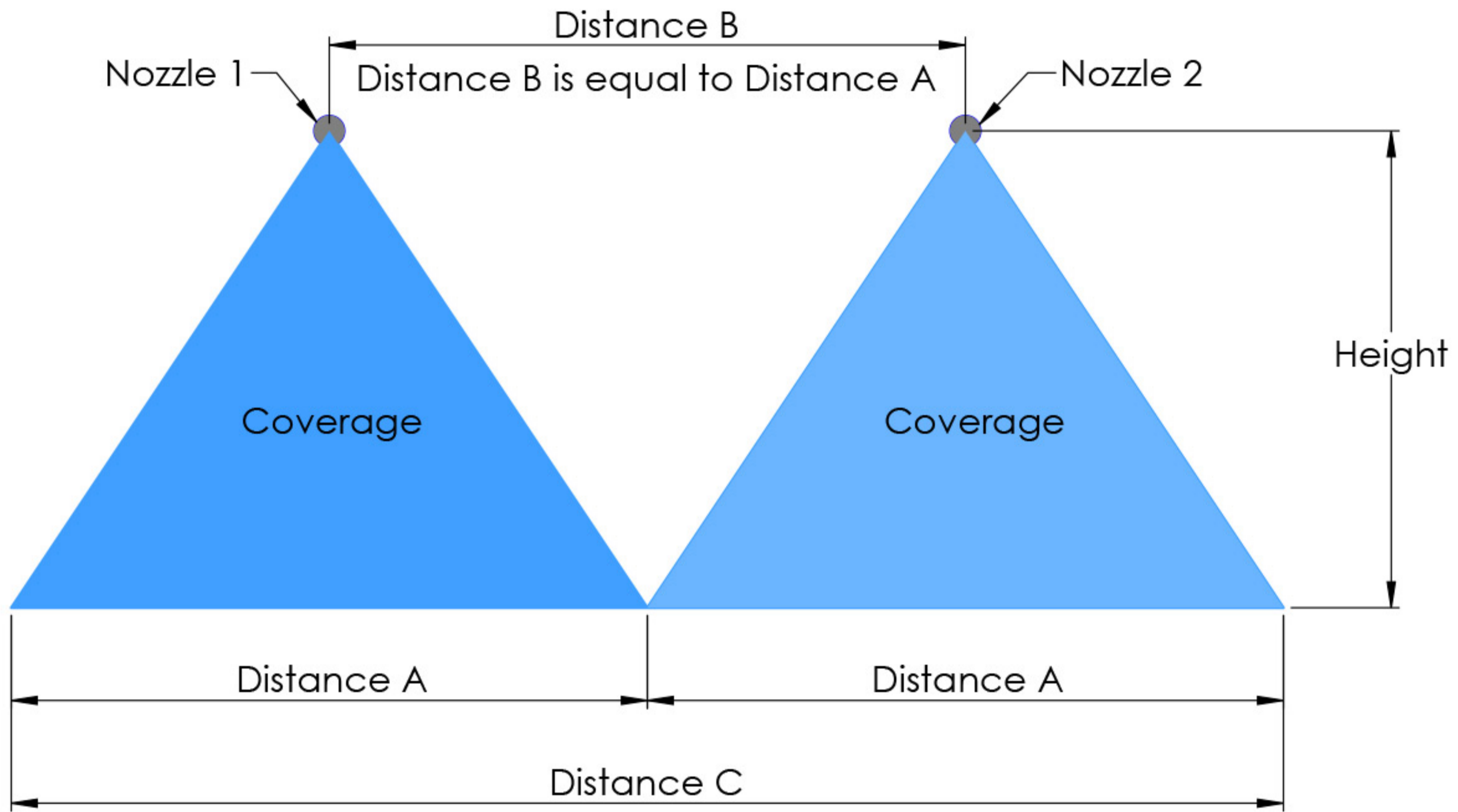
Coverage Settings

180357 - 100 Spreader nozzle

Unit	Nozzle QTY	Coverage at 24" Height	Coverage at 36" Height	Coverage at 48" Height
LV Foamer	1	32"	NA	NA
LC Foamer	2	64"	NA	NA
HV Foamer	4	128"	NA	NA

180359 - 200 Spreader nozzle

Unit	Nozzle QTY	Coverage at 24" Height	Coverage at 36" Height	Coverage at 48" Height
LC Foamer	1	46"	60"	70"
HV Foamer	2	92"	120"	140"



Note:
Nozzles can be rotated to get a shorter distance to prevent overspray.